

# Bourée

Gitarre 1

Gitarre 2

Gitarre 3

Gitarre 4

5

trw

1.

2.

10

14



This system contains measures 14 through 17. It features four staves: a single treble staff at the top and a grand staff (treble and bass) below. The key signature has two sharps (F# and C#). The music includes eighth and sixteenth notes, some beamed together, and rests. Measure 17 ends with a repeat sign.

18



This system contains measures 18 through 21. It features four staves: a single treble staff at the top and a grand staff (treble and bass) below. The key signature has two sharps. The music includes eighth and sixteenth notes, some beamed together, and rests. Measure 21 ends with a repeat sign.

22



This system contains measures 22 through 25. It features four staves: a single treble staff at the top and a grand staff (treble and bass) below. The key signature has two sharps. Measures 22-24 contain complex rhythmic patterns with many beamed notes. Measure 25 is a double bar line with first and second endings. The first ending leads back to an earlier section, and the second ending leads to a final cadence.

27

*ab hier Aufteilung der dividierte Oberstimme auf 2 und 4*

31

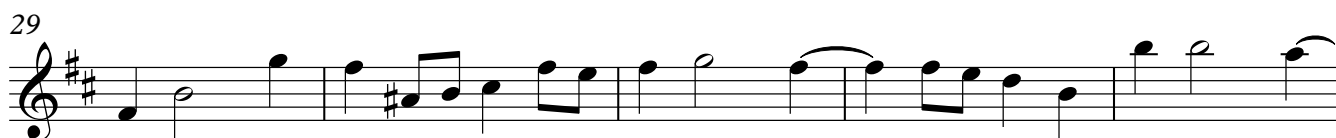
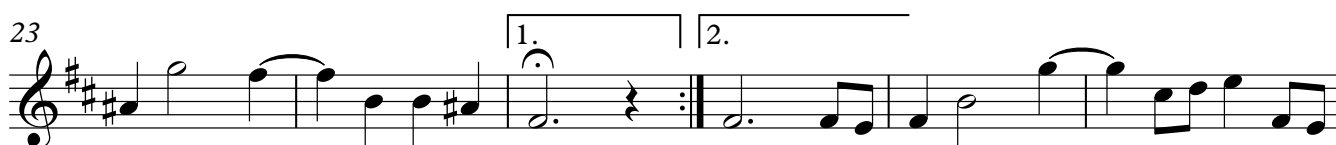
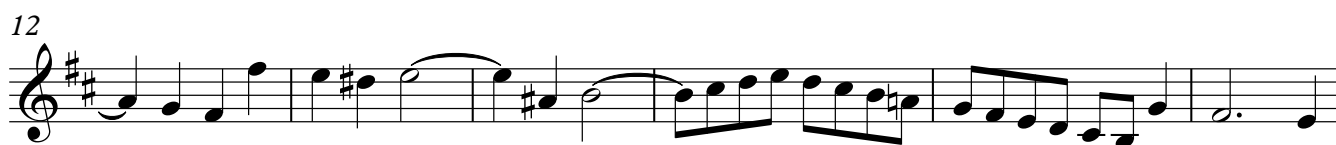
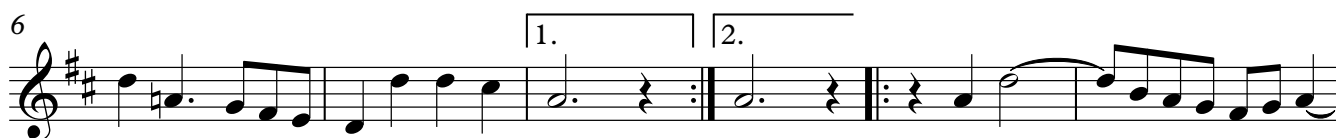
35

**da capo**

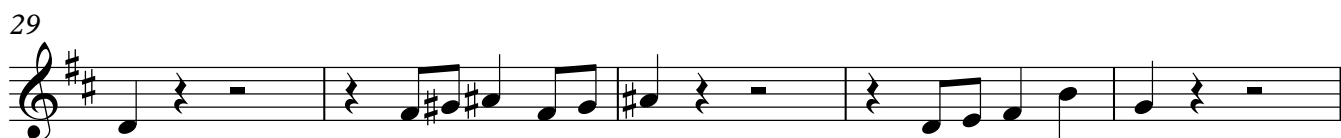
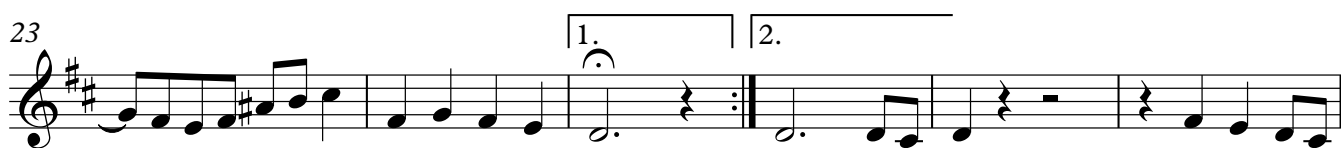
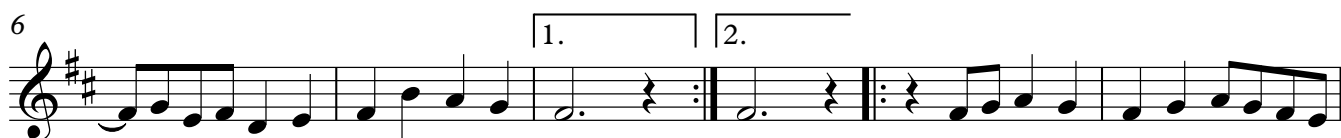
## Bourée



## Gitarre 2



### Gitarre 3



## Bourée

